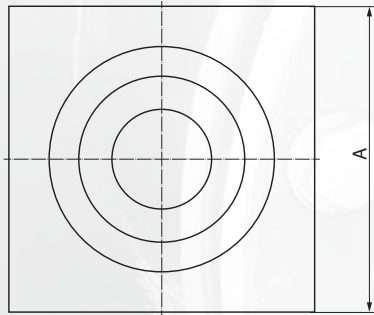
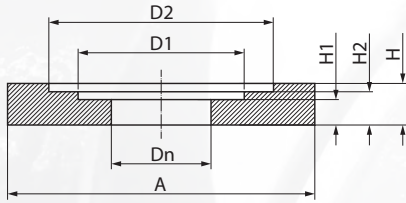


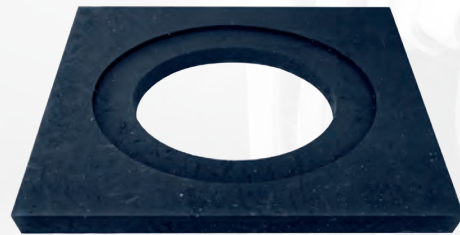
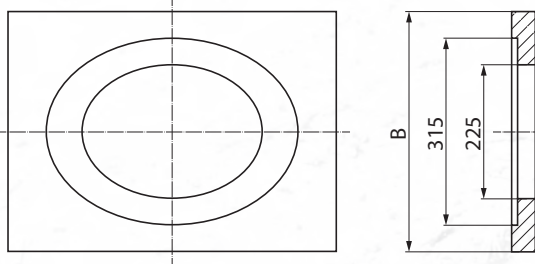
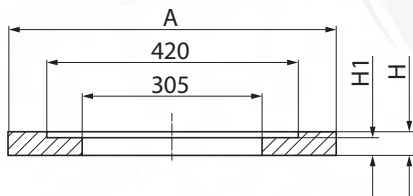
Composite elements



TXP/370/120

No.	Description	Dn	D1	D2	A	H	H1	H2	Weight
1.	Support pad for valve street boxes	120	200	270	370	50	30	40	6,80

Universal support adapters placed under street boxes that are used in water and gas installations. Installed on a sand bed (min. 5cm thick) or fortified substructure in order to provide a stable installation of boxes and secure them against movement and settlement.



TXP/550/225

No.	Description	A	B	H	H1	Weight
1.	Support pad for hydrant boxes	555	405	40	30	8,60

Support adapter placed under the oval box for hydrant. It is installed on a sand bed (min. 5cm thick) or fortified substructure in order to provide a stable installation of a box and secure it against movement and settlement.

Material: composition of thermoplastic polymers (PVC, PE, PEX)
 Compressive strength: 400 kN in accordance with PN-EN 124-1:2015-07
 Impregnability: 0,02% in accordance with PN-EN ISO 62:2008
 Frost resistance in water: F150 (without changing the strength and surface structure)
 Frost resistance in 2% NaCl solution: F50 (without changing the strength and surface structure)
 Thermal resistance: from -30°C to + 60°C (in continuous operation)
 and up to 180°C during installation in asphalt surface
 Certificate: IBDiM-KOT-2017/0047