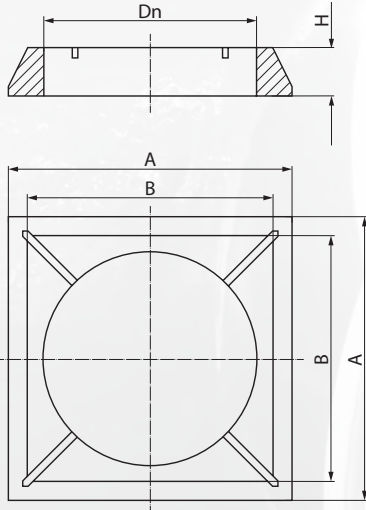


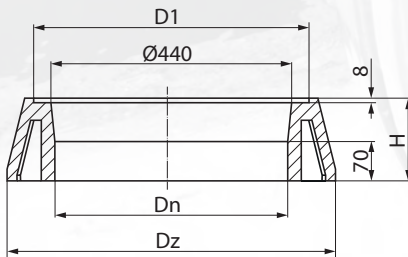
## Composite elements



TXP/315/PN

No.	Description	Dn	A	B	H	Weight
1.	Conical pad under the manhole body 370/370	330	440	380	75	8,30

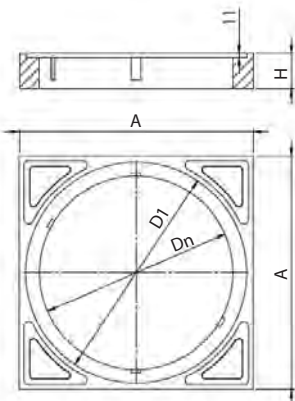
Support adapter used to support DN315 telescope manholes and drains installed in a bituminous layer. Intended to be placed under square load-bearing bodies of manholes with external flange dimensions of up to 370x370mm.



T3/400/N

No.	Description	Dn	Dz	D1	H	Weight
1.	Conical pad under the round manhole body 425/500	425	600	500	150	17,50

Conical pad for telescopic manhole pipe DN425. Used for supporting 425/500 telescopic manholes covers or grates. Intended under the body of a round supporting covers with external dimension Ø 500.



TXP/460/N

No.	Description	Dn	A	D1	H	Weight
1.	Pad under the round manhole body 425/460	405	490	463	75	10,0

Pad for telescopic manhole pipe DN425. Used for supporting 425/460 telescopic manholes covers or grates. Intended under the body of a round supporting covers with external dimension Ø 460.

Material: composition of thermoplastic polymers (PVC, PE, PEX)  
 Compressive strength: 400 kN in accordance with PN-EN 124-1:2015-07  
 Impregnability: 0,02% in accordance with PN-EN ISO 62:2008  
 Frost resistance in water: F150 (without changing the strength and surface structure)  
 Frost resistance in 2% NaCl solution: F50 (without changing the strength and surface structure)  
 Thermal resistance: from -30°C to + 60°C (in continuous operation)  
 and up to 180°C during installation in asphalt surface  
 Certificate: IBDiM-KOT-2017/0047